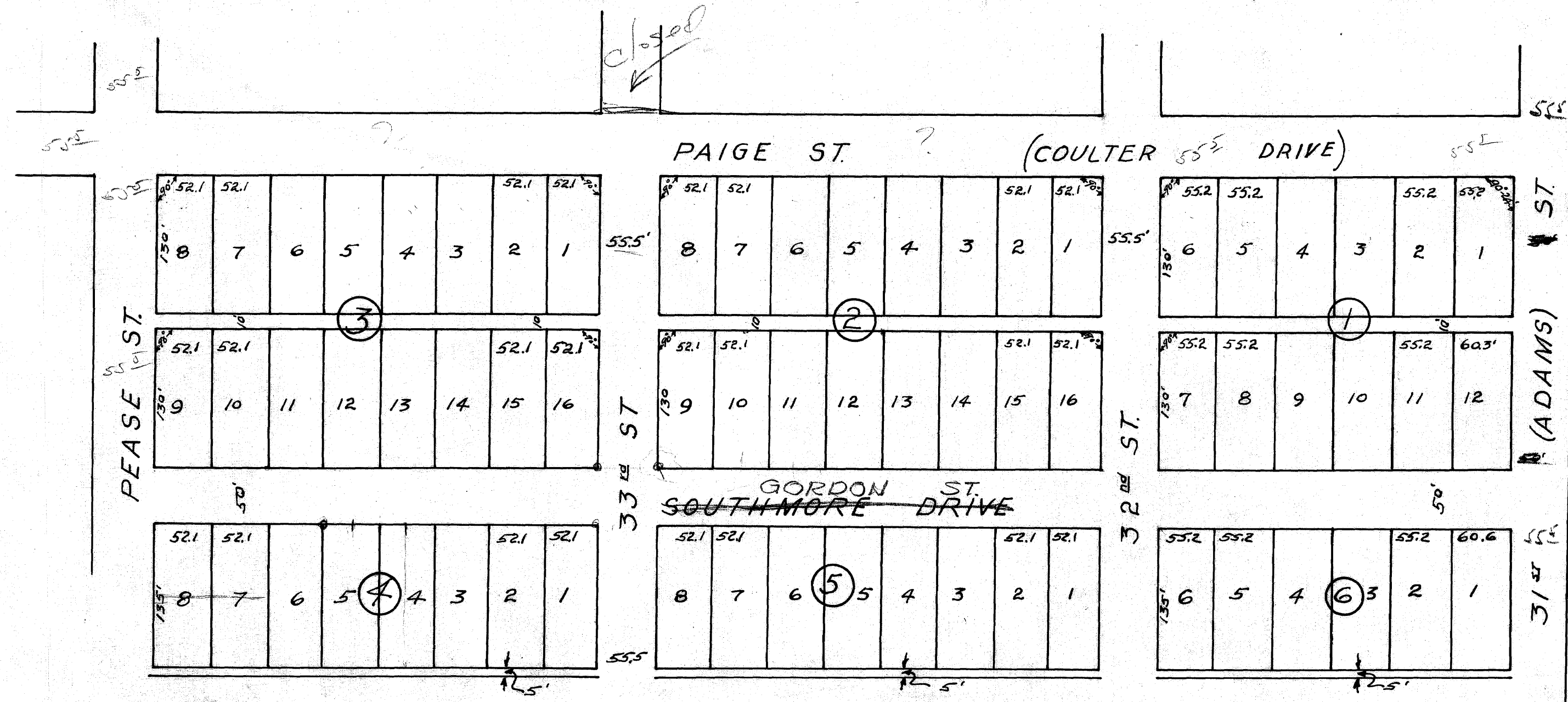
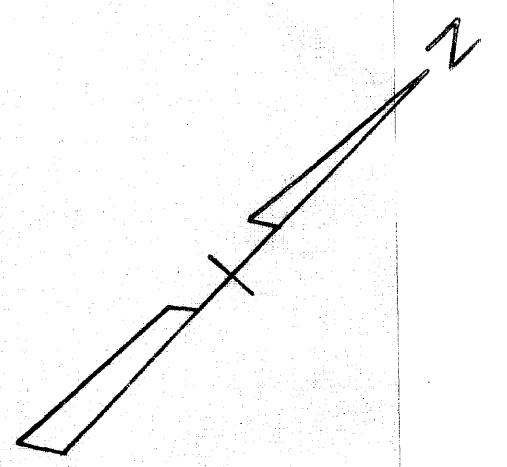


ROW OF COULTER DR DETERMINED TO BE 70 FEET PER CITY ENGINEER P. KASPAR - 4/2015

School

SCHOOL

CAVITT'S SOUTHMORE ADD.  
D.R. 104 Pg. 73  
Scale: 1" ≈ 100'-0"  
JULY, 1940



on balance  
12/16/40